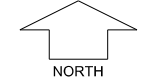


**THE BROOK AT BYFORD
STAGE 2 C**
SCALE 1:250
Preliminary



MNG. Ref: 95182lip-043f Date: 14/09/2020
All dimensions and areas are subject to survey. The particulars on this brochure are supplied for information only and shall not be taken as a representation in any respect on the part of the Vendor or its agent. Authorities should be consulted when services are contained within lot boundaries as building restrictions may apply. All retaining walls and associated easements are shown exaggerated for clarity.
Engineering still to be finalised and subject to change.

LEGEND

- | | | | | | |
|--|-------------------------------|--|--------------------------------|--|--------------------------------------|
| | WATER | | POWER DOME MINI PILLAR | | TOP OF KERB HEIGHT |
| | WATER METER/ DEFERRED SERVICE | | POWER DOME UNIVERSAL PILLAR | | SPOT LEVEL |
| | VALVE / HYDRANT | | STREETLIGHTS | | PAD LEVEL |
| | SEWER / MANHOLE | | PADMOUNT SITE | | ROAD LEVEL |
| | DRAINAGE | | LIMESTONE RETAINING WALL | | SUBSOIL DRAINAGE |
| | SEWER / MANHOLE | | REINFORCED RETAINING WALL | | DRAINAGE EASEMENT AND LOT CONNECTION |
| | PREFERRED GARAGE LOCATION | | OCHRE RETAINING WALL | | BUSHFIRE ATTACK LEVEL |
| | DESIGNATED GARAGE LOCATION | | NATIONAL BROAD BAND CONNECTION | | BOLLARDS |