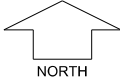


**THE BROOK  
AT BYFORD  
STAGE 2 C**

**SCALE 1:250**

**Preliminary**



**MNG** Ref: 95182lip-043f Date: 14/09/2020  
 All dimensions and areas are subject to survey. The particulars on this brochure are supplied for information only and shall not be taken as a representation in any respect on the part of the Vendor or its agent. Authorities should be consulted when services are contained within lot boundaries as building restrictions may apply. All retaining walls and associated easements are shown exaggerated for clarity.  
 Engineering still to be finalised and subject to change.

**LEGEND**

- |  |                                |  |                             |  |                                      |
|--|--------------------------------|--|-----------------------------|--|--------------------------------------|
|  | WATER                          |  | POWER DOME MINI PILLAR      |  | TOP OF KERB HEIGHT                   |
|  | WATER METER/ DEFERRED SERVICE  |  | POWER DOME UNIVERSAL PILLAR |  | SPOT LEVEL                           |
|  | VALVE / HYDRANT                |  | STREETLIGHTS                |  | PAD LEVEL                            |
|  | DRAINAGE                       |  | PADMOUNT SITE               |  | ROAD LEVEL                           |
|  | SEWER / MANHOLE                |  | LIMESTONE RETAINING WALL    |  | SUBSOIL DRAINAGE                     |
|  | GARAGE LOCATION                |  | REINFORCED RETAINING WALL   |  | DRAINAGE EASEMENT AND LOT CONNECTION |
|  | NATIONAL BROAD BAND CONNECTION |  | OCHRE RETAINING WALL        |  | BUSHFIRE ATTACK LEVEL                |
|  |                                |  |                             |  | BAL 12.5                             |
|  |                                |  |                             |  | BOLLARDS                             |