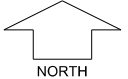


**THE BROOK AT BYFORD STAGE 2 B**  
**SCALE 1:250**  
**Preliminary**



**MNG**. Ref: 95182lip-040d Date: 14/09/2020  
 All dimensions and areas are subject to survey. The particulars on this brochure are supplied for information only and shall not be taken as a representation in any respect on the part of the Vendor or its agent. Authorities should be consulted when services are contained within lot boundaries as building restrictions may apply. All retaining walls and associated easements are shown exaggerated for clarity.  
 Engineering still to be finalised and subject to change.

**LEGEND**

- |  |                                |  |                             |  |                                      |
|--|--------------------------------|--|-----------------------------|--|--------------------------------------|
|  | WATER                          |  | POWER DOME MINI PILLAR      |  | TOP OF KERB HEIGHT                   |
|  | WATER METER/ DEFERRED SERVICE  |  | POWER DOME UNIVERSAL PILLAR |  | SPOT LEVEL                           |
|  | VALVE / HYDRANT                |  | STREETLIGHTS                |  | PAD LEVEL                            |
|  | SEWER / MANHOLE                |  | PADMOUNT SITE               |  | ROAD LEVEL                           |
|  | SEWER / MANHOLE                |  | LIMESTONE RETAINING WALL    |  | SUBSOIL DRAINAGE LINE                |
|  | PREFERRED GARAGE LOCATION      |  | REINFORCED RETAINING WALL   |  | DRAINAGE EASEMENT AND LOT CONNECTION |
|  | DESIGNATED GARAGE LOCATION     |  | OCHRE RETAINING WALL        |  | BOLLARDS                             |
|  | NATIONAL BROAD BAND CONNECTION |  | BIN PADS                    |  | BAL 12.5                             |
|  |                                |  |                             |  | BAL 19                               |
|  |                                |  |                             |  | BAL 29                               |