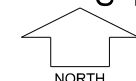


THE BROOK
AT BYFORD
STAGE 2 B

SCALE 1:250

Preliminary



MNG. Ref: 95182lip-040d Date: 14/09/2020
All dimensions and areas are subject to survey. The particulars on this brochure are supplied for information only and shall not be taken as a representation in any respect on the part of the Vendor or its agent. Authorities should be consulted when services are contained within lot boundaries as building restrictions may apply. All retaining walls and associated easements are shown exaggerated for clarity.
Engineering still to be finalised and subject to change.

LEGEND

- | | | | | | | | |
|--|-------------------------------|--|--------------------------------|--|----------------------------|--|--------------------------------------|
| | WATER | | POWER DOME MINI PILLAR | | LIMESTONE RETAINING WALL | | BIN PADS |
| | WATER METER/ DEFERRED SERVICE | | POWER DOME UNIVERSAL PILLAR | | REINFORCED RETAINING WALL | | TOP OF KERB HEIGHT |
| | VALVE / HYDRANT | | STREETLIGHTS | | OCHRE RETAINING WALL | | SPOT LEVEL |
| | SEWER / MANHOLE | | PADMOUNT SITE | | PREFERRED GARAGE LOCATION | | PAD LEVEL |
| | DRAINAGE | | NATIONAL BROAD BAND CONNECTION | | DESIGNATED GARAGE LOCATION | | ROAD LEVEL |
| | | | SUBSOIL DRAINAGE | | BAL 12.5 | | DRAINAGE EASEMENT AND LOT CONNECTION |
| | | | | | BAL 19 | | BOLLARDS |
| | | | | | BAL 29 | | |