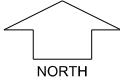


**THE BROOK
AT BYFORD
STAGE 2 A**

SCALE 1:250



MNG Ref: 95182lip-030b Date: 15/05/2018
 All dimensions and areas are subject to survey. The particulars on this brochure are supplied for information only and shall not be taken as a representation in any respect on the part of the Vendor or its agent. Authorities should be consulted when services are contained within lot boundaries as building restrictions may apply. All retaining walls and associated easements are shown exaggerated for clarity.
 Engineering still to be finalised and subject to change.

LEGEND

- | | | | | | |
|--|--------------------------------|--|-------------------------------|--|--------------------------------------|
| | WATER | | POWER DOME UNIVERSAL PILLAR | | SUBSOIL MAINTENANCE SHAFT/RISER |
| | WATER METER/ DEFERRED SERVICE | | POWER DOME UNIVERSAL PILLAR | | TOP OF KERB HEIGHT |
| | VALVE / HYDRANT | | STREETLIGHTS | | SPOT LEVEL |
| | DRAINAGE | | PADMOUNT SITE | | PAD LEVEL |
| | SEWER / MANHOLE | | NATURAL COLOUR RETAINING WALL | | ROAD LEVEL |
| | GARAGE LOCATION | | TWINSIDE RETAINING WALL | | DRAINAGE EASEMENT AND LOT CONNECTION |
| | NATIONAL BROAD BAND CONNECTION | | OCHRE RETAINING WALL | | |